



# Calvatis GmbH

Operating and  
hygiene technology





## Your partner for... ...innovative hygiene management

Calvatis is one of the leading independent manufacturers of cleaning and disinfection products. We offer our customers individual hygiene concepts based on this experience. Calvatis has been successfully represented in the global market for over 75 years with its calgonit product range.

### The main applications are in

- Hygiene consulting and hygiene management
- Beverage industry
- Food industry
- Institutions
- Milk-processing industry
- Agriculture
- Equipment and systems technology
- Water treatment
- Laundry
- Production to order

**calvatis**  
**calgonit**  
industrial

Calvatis has a mature product range of over 1,000 branded products in the calgonit product lines and can therefore provide integrated hygiene concepts for all areas.

Calvatis develops and produces at its Ladenburg site in Germany, from where it also coordinates global sales of products and services.

Calvatis products and the company's comprehensive services provide all customers with top quality at an optimal price/performance ratio.

Calvatis is certified according to      ► DIN EN ISO 9001 and      ► DIN EN ISO 14001

Calvatis specialises in the production of cleaning and disinfection products, particularly when it comes to services, to ensure clear differentiation from competitors.

High quality and environmental awareness are second nature for Calvatis, are lived, maintained and continuously adapted to the increasing demands in the market.

# Table of contents



	<b>Page</b>
<b>Collection tray</b>	4 - 10
<b>Soap/disinfectant dispenser</b>	11 - 13
<b>Hygiene technology</b>	14 - 21
Hand hygiene - forcibly actuated	16
Hygiene sluices	17 - 18
Hygiene sluices and sole cleaning	19
Dispensing systems	20 - 21

# Collection tray



# Collection tray

## DIBt General building approval

The legislator requires that single-walled containers containing flammable or water-hazardous liquids must be stored on drip pans. The drip pan must be capable of holding the contents of the largest individual container stored on or in it, and at least 10% of the whole volume stored. If storage is permitted in water protection areas, the drip pan must be capable of holding the whole volume stored.



For insertion  
without  
a grating



For use  
with  
grating



**For all sizes of container!**



Image may differ from the actual product

# Collection tray

## PE-Collection tray classic line 60 - MG - NU - Blue



### Technical data

- ✓ Container: Small jerrycans, Drums
- ✓ Colour: blue
- ✓ Approval: DIBt Appr. no.: Z-40.22-55 86704615
- ✓ Collection capacity: 60 L
- ✓ Dimensions (WxDxH): 645 x 795 x 235 mm
- ✓ Version: With PE grating. Does not admit forklift
- ✓ Carrying capacity: 240 kg

## PE-Collection tray classic line 60 - OG - NU - Blue



### Technical data

- ✓ Container: Jerrycans
- ✓ Colour: blue
- ✓ Approval: DIBt Appr. no.: Z-40.22-55 86704613
- ✓ Collection capacity: 60 L
- ✓ Dimensions (WxDxH): 645 x 795 x 210 mm
- ✓ Version: Without grating. Does not admit forklift
- ✓ Carrying capacity: 240 kg

# Collection tray

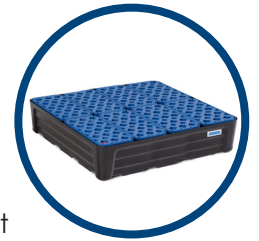
## PE-Collection tray pro line 80 - MG - NU - Black

### Technical data

86704614

- ✓ Container:
- ✓ Colour:
- ✓ Approval:
- ✓ Collection capacity:
- ✓ Dimensions (WxDxH):
- ✓ Version:
- ✓ Carrying capacity:

Small jerrycans  
black  
DIBt Appr. no.: Z-40.22-559  
80 L  
784 x 784 x 180 mm  
With PE grating. Does not admit forklift  
200 kg



## PE-Collection tray pro line 80 - OG - NU - Black

### Technical data

86704612

- ✓ Container:
- ✓ Colour:
- ✓ Approval:
- ✓ Collection capacity:
- ✓ Dimensions (WxDxH):
- ✓ Version:
- ✓ Carrying capacity:

Small jerrycans  
black  
DIBt Appr. no.: Z-40.22-559  
80 L  
784 x 784 x 180 mm  
Without grating. Does not admit forklift  
200 kg



# Collection tray

## PE-Collection tray base line 220 - MG - UF - Orange



### Technical data

- ✓ Container: Drums and Jerrycans
- ✓ Colour: orange
- ✓ Approval: DIBt Appr. no.: Z-40.22-538 86704616
- ✓ Collection capacity: 220 L
- ✓ Dimensions (WxDxH): 865 x 1,245 x 375 mm
- ✓ Version: With PE grating. Forklift compatible
- ✓ Carrying capacity: 440 kg

## PE-Collection tray base line 220 - OG - UF - Orange



### Technical data

- ✓ Container: Drums and Jerrycans
- ✓ Colour: orange
- ✓ Approval: DIBt Appr. no.: Z-40.22-538 86704618
- ✓ Collection capacity: 220 L
- ✓ Dimensions (WxDxH): 865 x 1,245 x 350 mm
- ✓ Version: Without grating. Forklift compatible
- ✓ Carrying capacity: 760 kg

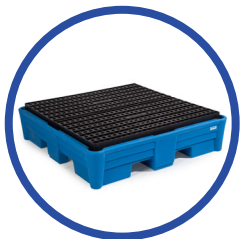
## PE-Collection tray classic line 220 - MG - UF - Blue



### Technical data

- ✓ Container: Drums and Jerrycans
- ✓ Colour: blue
- ✓ Approval: DIBt Appr. no.: Z-40.22-55 86704619
- ✓ Collection capacity: 220 L
- ✓ Dimensions (WxDxH): 1,330 x 930 x 410 mm
- ✓ Version: With PE grating. Forklift compatible
- ✓ Carrying capacity: 800 kg

## PE-Collection tray classic line 220 - MG - UF - Blue



### Technical data

- ✓ Container: Drums and Jerrycans
- ✓ Colour: blue
- ✓ Approval: DIBt Appr. no.: Z-40.22-55 86704617
- ✓ Collection capacity: 220 L
- ✓ Dimensions (WxDxH): 1,330 x 1,330 x 320 mm
- ✓ Version: With PE grating. Forklift compatible
- ✓ Carrying capacity: 1,600 kg

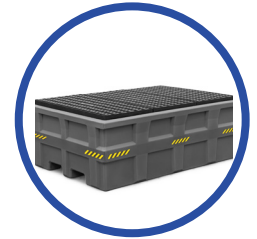


## PE-Collection tray pro line 1000 - MG - UF - Black 1 IBC

### Technical data

86704621

- ✓ Container: IBC, Drums and Jerrycans
- ✓ Colour: black
- ✓ Approval: DIBt Appr. no.: Z-40.22-563
- ✓ Collection capacity: 1,000 L
- ✓ Dimensions (WxDxH): 1,370 x 1,980 x 720 mm
- ✓ Version: With PE grating. Forklift compatible
- ✓ Carrying capacity: 2,000 kg



## PE-Collection tray pro line 1000 - MG - UF - Black 2 IBC

### Technical data

86704622

- ✓ Container: IBC, Drums and Jerrycans
- ✓ Colour: black
- ✓ Approval: DIBt Appr. no.: Z-40.22-563
- ✓ Collection capacity: 1,000 L
- ✓ Dimensions (WxDxH): 2,530 x 1,320 x 610 mm
- ✓ Version: With PE grating. Forklift compatible
- ✓ Carrying capacity: 4,000 kg



# Collection tray

## PE-Collection tray classic line 1000 - MG - MA - UF - Blue

### Technical data



- ✓ Container: IBC, Drums and Jerrycans
  - ✓ Colour: blue
  - ✓ Approval: DIBt Appr. no.: Z-40.22-421
  - ✓ Collection capacity: 1,000 L
  - ✓ Dimensions (WxDxH): 2,460 x 1,800 x 485 mm
  - ✓ Version: With PE grating and filling zone. Forklift compatible.
  - ✓ Carrying capacity: 4,000 kg
- 86704623

## PE-Collection tray classic line 1000 - MG - MA - UF - Blue

### Technical data



- ✓ Container: IBC, Drums and Jerrycans
  - ✓ Colour: blue
  - ✓ Approval: DIBt Appr. no.: Z-40.22-421
  - ✓ Collection capacity: 1,000 L
  - ✓ Dimensions (WxDxH): 3,640 x 1,800 x 475 mm
  - ✓ Version: With PE grating and filling zone. Forklift compatible.
  - ✓ Carrying capacity: 6,000 kg
- 86704624

**Please contact us for information about further types of collection tray.**

# Soap / disinfectant dispenser



# Soap / disinfectant dispenser

## Calvatis Soap Dispenser Typ T3a



### Technical data

- ✓ Container capacity: 1000 ml (Euro bottle)
- ✓ Housing: Plastic
- ✓ Operating handle: short
- ✓ Label: Soap

86499900

## Calvatis Disinfectant Dispenser Typ T3a



### Technical data

- ✓ Container capacity: 1000 ml (Euro bottle)
- ✓ Housing: Plastic
- ✓ Operating handle: short
- ✓ Label: Disinfection

86499901

## Calvatis Universal Dispenser Typ T3a



### Technical data

- ✓ Container capacity: 1000 ml (Euro bottle)
- ✓ Housing: Plastic
- ✓ Operating handle: long
- ✓ Label: none

86499993

## Automatic contact-free Disinfectant Dispenser



### Technical data

- ✓ Container capacity: 1000 ml (Euro bottle)
- ✓ Housing: Plastic
- ✓ Operation: sensor-controlled

86499989

Empty bottle is **not** included in the scope of delivery!

## calgonit Soap / Disinfectant Dispenser VA



### Technical data

- ✓ Container capacity: 1000 ml (Euro bottle)
- ✓ Housing: Stainless steel
- ✓ Operating handle: short

86499923

Empty bottle is **not** included in the scope of delivery!

Image may differ from the actual product

# Soap / disinfectant dispenser

## Calvatis Soap/ Disinfectant Dispenser Typ T3.1

86499996

### Technical data

- ✓ Container capacity: 500 ml
- ✓ Housing: Plastic / VA
- ✓ Operating handle: short



## Stainless steel Dispenser

86499100

### Technical data

- ✓ Container capacity: 1000 ml (Euro bottle)
- ✓ Housing: Stainless steel
- ✓ Operating handle: long



## Soap / Disinfectant Dispenser SDS-A

86499916

### Technical data

- ✓ Container capacity: 900 ml
- ✓ Housing: Stainless steel
- ✓ Operation: sensor-controlled



## Stainless steel dispenser with stainless steel podium

86499914

### Technical data

- ✓ Container capacity: 1000 ml (Euro bottle)
- ✓ Material: Stainless steel
- ✓ Dimensions (LxWxH): 420 x 420 x 1350 mm



Stainless steel dispenser is included in the scope of delivery!

## Plastic podium

Anthracite  
86499919

### Technical data

- ✓ Material: Plastic
- ✓ Dimensions (LxWxH): 350 x 350 x 1100 mm

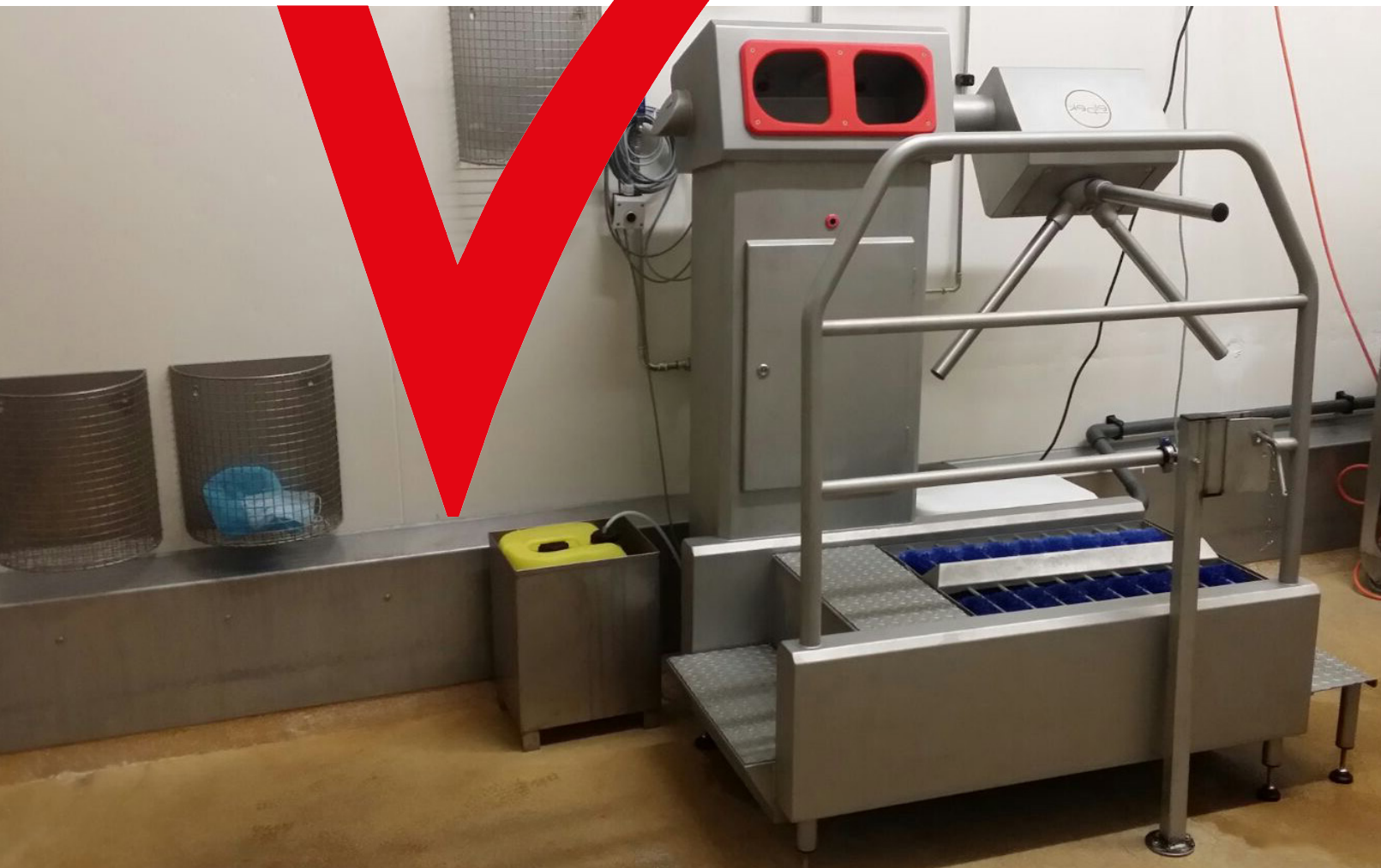
White  
86499918

Dispenser is **not** included in the scope of delivery!



Image may differ from the actual product

# Hygiene technology



# Our partner in hygiene technology

## elpek - Quality is no coincidence.

Advantages which convince:

- ✓ Our speed and flexibility give us the edge
- ✓ Unique elpek hygiene design
- ✓ Consistent use of 1.4301 stainless steel
- ✓ Turnstile interior fully manufactured in 1.4301 stainless steel
- ✓ Robust industrial design
- ✓ Modular design - can be flexibly expanded at any time
- ✓ Brushes can be easily removed from the units without tools
- ✓ All hygienic airlocks equipped with logo control /variably adjustable at all times
- ✓ All canisters are accommodated in the compact columns of the hygienic airlocks, or lockable canister holders
- ✓ Control and access via your smartphone possible
- ✓ Special designs possible, adapted to the spatial conditions of the customer
- ✓ Drawing of the locks into your DWG / DXF room plans free of charge
- ✓ Telephone support also beyond normal office hours



# Hand hygiene - forcibly actuated

## Hand disinfecter DA



### Product features

- ✓ Hygienic design and compact construction
- ✓ Manufactured consistently from 1.4301 or higher grade stainless steel
- ✓ Chemicals canister (max. 5 L) on the left or right side
- ✓ Control lamps for entry and exit
- ✓ Logo control, code-protected, any operating times easily adjustable
- ✓ Turnstile interior completely made of stainless steel 1.4301
- ✓ System construction
- ✓ Automatic hand disinfection
- ✓ Illuminated disinfection chamber
- ✓ Sensor-controlled detection of persons
- ✓ Passage capacity of up to 120 people per 10 minutes in production direction

### Technical data

- ✓ Dimensions (WxTxH): 499 (679) x 885 x 580 mm
- ✓ Electrical connection: 230 V / 50 Hz
- ✓ Power consumption: 0.2 kW
- ✓ Protection class: IP 65
- ✓ Fogging nozzles: 4

### Versions

- ✓ Left or right hand disinfection arrangement
- ✓ Wall mounting
- ✓ Potential-free contact for registering the working time or as access control
- ✓ Potential-free contact for door opener or traffic light control
- ✓ Also available as SA Soap Dispenser

## Hand Disinfection Machine DA-F with robust stand



### Product features

- ✓ Hygienic design and compact construction
- ✓ Manufactured consistently from 1.4301 or higher grade stainless steel
- ✓ Turnstile interior completely made of stainless steel 1.4301
- ✓ Chemicals canister (max. 5 L) on the left or right side
- ✓ Control lamps for entry and exit
- ✓ Logo control, any function times easily adjustable
- ✓ Automatic hand disinfection
- ✓ Illuminated disinfection chamber
- ✓ Sensor-controlled detection of persons
- ✓ System construction
- ✓ Passage capacity of up to 120 people per 10 minutes in production direction

### Technical data

- ✓ Dimensions (WxTxH): 499 (679) x 885 x 1,425 mm
- ✓ Electrical connection: 230 V / 50 Hz
- ✓ Power consumption: 0.2 kW
- ✓ Protection class: IP 65
- ✓ Fogging nozzles: 4

### Versions

- ✓ Left or right hand disinfection arrangement
- ✓ With sturdy stainless steel stand
- ✓ Potential-free contact for registering the working time or as access control
- ✓ Potential-free contact for door opener or traffic light control
- ✓ Also available as SA-F Soap Dispenser

Image may differ from the actual product



# Hygiene sluices

## Hygiene sluice DRS-R

### Product features

- ✓ Hygienic design and compact construction
- ✓ Manufactured consistently from 1.4301 or higher grade stainless steel
- ✓ Chemical canisters (max. 3 x 5 L) are accommodated in the column
- ✓ Canister empty signal via indicator lamp
- ✓ Control lamps for entry and exit
- ✓ Potential-free contact for registering the working time or as access control
- ✓ Logo control, any function times easily adjustable
- ✓ Dosing of the sole cleaning agent takes place via maintenance-free Venturi system
- ✓ Brushes easy to remove for cleaning without tools
- ✓ Turnstile interior completely made of stainless steel 1.4301
- ✓ Sole cleaning on entry and exit
- ✓ Forcibly guided by turnstile release after hand disinfection
- ✓ Passage capacity of up to 120 people per 10 minutes in production direction
- ✓ System construction

### Technical data

- ✓ Dimensions (WxTxH): 1,800 x 970 x 1,072 mm
- ✓ Brush length: 1,000 mm
- ✓ Electrical connection: 3x400 V / 50 Hz
- ✓ Power consumption: 0.7 kW
- ✓ Protection class: IP 65
- ✓ Water drainage/inlet: DN 50 / 3/4"
- ✓ Fogging nozzles: 4

### Versions

- ✓ Available with three brush lengths (500, 1,000 or 1,800 mm)
- ✓ Brush colours standard: red/blue or in special colours
- ✓ Left or right hand disinfection arrangement
- ✓ With integrated hand washing - monitored by control technology



## Hygiene sluice DRS-D

### Product features

- ✓ Forcibly guided by turnstile release after hand disinfection and sole cleaning
- ✓ Hygienic design and compact construction
- ✓ Double entry and exit
- ✓ Passage capacity of 40 - 70 persons per minute

### Technical data

- ✓ Dimensions (WxTxH): 2150 x 1,620 x 1,637 mm
- ✓ Electrical connection: 3x400 V / 50 Hz
- ✓ Power consumption: 0.6 kW
- ✓ Water drainage/inlet: DN 50 / 3/4"
- ✓ Protection class: IP 65

### Versions

- ✓ Control and access via smartphone
- ✓ Brush colours standard: red/blue or in special colours
- ✓ With integrated hand washing - monitored by control technology
- ✓ Potential-free contact for registering the working time or as access control
- ✓ With bootleg cleaning



Image may differ from the actual product

# Hygiene sluices

## Hand hygiene station HHS



### Product features

- ✓ Manufactured consistently from 1.4301 or higher grade stainless steel
- ✓ Hygienic design and compact construction
- ✓ Automatic soaping and hand washing under running water
- ✓ Thorough drying of hands with paper towels from a dispenser
- ✓ Disposing of the tissues in a wastebasket
- ✓ Hand sanitization
- ✓ Turnstile release to the passage

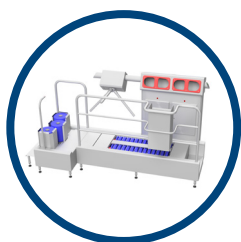
### Technical data

- ✓ Dimensions (BxTxH): 2,090 x 865 x 1,123 mm
- ✓ Electrical connection: 230 V / 50 Hz
- ✓ Power consumption: 0.3 kW
- ✓ Protection class: IP 65
- ✓ Water drainage/inlet: 3x<sup>3</sup>/<sub>4</sub>" / DN 50

### Versions

- ✓ Potential-free contact for registering the working time or as access control
- ✓ Potential-free contact for door opener or traffic light control
- ✓ Hand dryer integrated, optional
- ✓ Access control

## Hygiene station with soap and disinfection channel



### Product features

- ✓ Hygienic design and compact construction
- ✓ Manufactured consistently from 1.4301 or higher grade stainless steel
- ✓ Turnstile interior completely made of stainless steel 1.4301
- ✓ For reciprocal production entry and exit
- ✓ Chemical canisters (max. 3 x 5 L) are accommodated in the column
- ✓ Canister empty signal via indicator lamp
- ✓ Control lamps for entry and exit
- ✓ Logo control, any function times easily adjustable
- ✓ Dosing of the sole cleaning agent via maintenance-free Venturi system
- ✓ Brushes easy to remove for cleaning without tools
- ✓ Sole cleaning brush and two separate, illuminated insertion openings (wash and disinfect)
- ✓ For medium and larger production plants
- ✓ System construction
- ✓ Sensor-controlled

### Technical data

- ✓ Dimensions (WxTxH): 2,050 x 945(1,270 with dryer) x 1,623 mm
- ✓ Brush length: 1,050 mm
- ✓ Electrical connection: 3x400 V / 50 Hz
- ✓ Power consumption: 0.7 kW
- ✓ Protection class: IP 65
- ✓ Water drainage/inlet: DN 50 / <sup>3</sup>/<sub>4</sub>"

### Versions

- ✓ Brush colours standard: red/blue or in special colours
- ✓ Hand dryer integrated
- ✓ Potential-free contact for registering the working time or as access control
- ✓ Versions: left or right hand disinfection / soap chamber arrangement.
- ✓ Control and access via your smartphone
- ✓ With walk.through boot cleaner

Image may differ from the actual product

# Hygiene sluices and sole cleaning

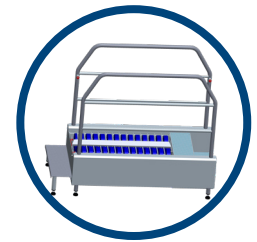
## Walk-through sole cleaner DSR

### Product features

- ✓ Manufactured consistently from 1.4301 or higher grade stainless steel
- ✓ For reciprocal production entry and exit
- ✓ Dosage via Venturi system
- ✓ Walk-through sole cleaner DSR
- ✓ All internal components are accessible from above through inspection doors
- ✓ The scope of delivery also includes a canister holder for chemical containers (max. 20 L)
- ✓ for wall mounting.
- ✓ Brushes are removable without tools

### Technical data

- ✓ Dimensions (WxTxH): 1,700 x 740 x 1,425 mm
- ✓ Brush length: 1,050 mm
- ✓ Brush colour: Blue
- ✓ Water drain: DN 50
- ✓ Water inlet:  $\frac{3}{4}$ "
- ✓ Electrical connection: 3x400 V / 50 Hz / 0.4 kW
- ✓ Robust industrial design with smooth glass bead blasted surface and rounded corners



## Sole cleaner

### Product features

- ✓ Manufactured consistently from 1.4301 or higher grade stainless steel
- ✓ With pitched roof design
- ✓ Brush mounted horizontally
- ✓ Activation by pushbutton on the grab rail
- ✓ Spray bar for detergent and water
- ✓ Dosage via Venturi system
- ✓ Ready for connection and plugging (incl. electric cable/plug)

Sealing material is required!

### Technical data

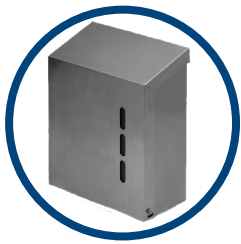
- ✓ Dimensions (WxTxH): 515 x 582.5 x 375 / 1,149 mm
- ✓ Electrical connection: 230 V / 50 Hz
- ✓ Power consumption: 0.25 kW
- ✓ Water inlet:  $\frac{3}{4}$ "
- ✓ Water drain:  $1\frac{1}{2}$ "
- ✓ Brush colour: Blue



Image may differ from the actual product

# Dispensing systems & waste containers

## Towel Dispenser HSP 600



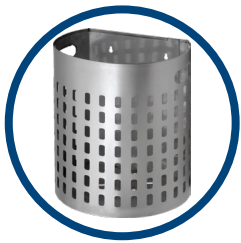
### Product features

- ✓ Manufactured consistently from 1.4301 or higher grade stainless steel
- ✓ Front flap swivels down
- ✓ With fill level indicator
- ✓ With pitched roof
- ✓ Suitable for 600 paper folding towels

### Technical data

- ✓ Dimensions (WxTxH): 270 x 130 x 330 mm

## Recycle bin



### Product features

- ✓ Manufactured consistently from 1.4301 or higher grade stainless steel
- ✓ Suitable for mounting on washbasins or for wall mounting

### Technical data

- ✓ Shape: semicircular
- ✓ Dimensions (WxTxH): 280 x 352 x 420 mm
- ✓ Volume: 35 L

## Handwash Basin RS-SP



### Product features

- ✓ Manufactured consistently from 1.4301 or higher grade stainless steel
- ✓ Chrome plated water outlet
- ✓ Incl. two pre-mounted stainless steel dispensers for soap and disinfectant
- ✓ Incl. syphon, cardboard box and mounting material
- ✓ With raised back panel
- ✓ Can be easily connected to a PVC wastewater connection pipe
- ✓ Sensor-controlled

### Technical data

- ✓ Dimensions (WxDxH): 450 x 450 x 240 / 685 mm
- ✓ Drain: DN 50
- ✓ Electrical connection: 230 V / 50 Hz
- ✓ Protection class: IP 65
- ✓ Control voltage: 24 V
- ✓ Basin dimension: 360 x 335 x 150 mm
- ✓ Connection to pre-mixer for cold water: R 1/2"
- ✓ Connection to pre-mixer for cold water: R 1/2"

Image may differ from the actual product

# Dispensing systems

## Dispenser for sanitary boxes

### Product features

- ✓ Manufactured consistently from 1.4301 or higher grade stainless steel
- ✓ Wall mounting
- ✓ Surface dull grind, grain 240
- ✓ For different hygiene items (on request)



## Gloves-Dispenser

### Product features

- ✓ Manufactured consistently from 1.4301 or higher grade stainless steel
- ✓ Suitable for wall mounting
- ✓ With sorting slot above the discharging shaft
- ✓ Viewing window made of ESG for fill level indication
- ✓ With two pass partition plates for glove sizes M, L, XL



### Technical data

- ✓ Surface with dull grind
- ✓ Dimensions (WxTxH): 400 x 175 x 550 mm

## Universal-Dispenser

### Product features

- ✓ Manufactured consistently from 1.4301 or higher grade stainless steel
- ✓ Suitable for hair nets and beard nets
- ✓ Suitable for wall mounting
- ✓ With sorting slot above the discharging shaft
- ✓ Viewing window made of ESG for fill level indication

### Technical data

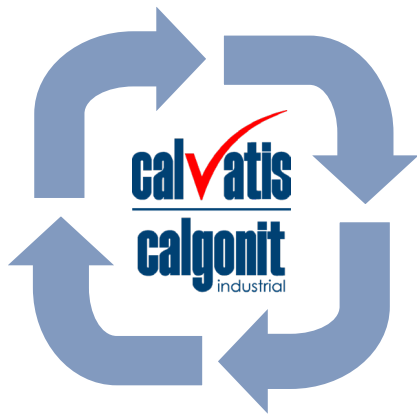
- ✓ Dimensions (WxTxH): 400 x 175 x 550 mm
- ✓ Surface with dull grind

### Versions

- ✓ Optionally with separator plate



Image may differ from the actual product



## For optimal hygiene management

Our goal is to ensure a comprehensive service range to make the applications in your organisation technically safe, economically effective and ecologically friendly at all times.

We further support and advise our customers with a company-specific product selection according to their needs as well as optimal product application to ensure effective cleaning and disinfection processes.

### Calvatis

- ✓ helps you optimise your cleaning and disinfection processes
- ✓ helps you find the causes of faults
- ✓ helps you implement effective measures to deal with events

### Calvatis...

...analyses the initial situation on site (current state protocol; report) and plans the use of the products with you

- ✓ order suggestions
- ✓ work instructions
- ✓ storage concepts

...documents the planned use (cleaning and disinfection plan)

### Calvatis...

...helps you evaluate the results of monitoring

- ✓ through statistical evaluation
- ✓ and shows the need for action

...supports you in the annual verification of the cleaning and disinfection procedures

...checks and reports the plan and target specifications for cleaning and disinfection (amounts; costs; processes)

...trains your staff

- ✓ to handle cleaning and disinfection agents
- ✓ for personal hygiene
- ✓ in dealing with illnesses

...regularly monitors adherence to specifications by determining the concentrations used and the success achieved

...documents these monitoring results

- ✓ service report per visit





**Calvatis GmbH**

**Am Hafen 16 • 68526 Ladenburg • Germany**

**Tel: +49 6203 105-0 • Fax: +49 6203 105-111**

**[info@calvatis.com](mailto:info@calvatis.com) • [www.calvatis.com](http://www.calvatis.com)**

Version: January 2021