



calgonit FlexDos series

Time and interval controlled
Dosing

Easy adjustment of the
product concentration

Easy handling



calgonit FlexDos Foam

Combination of calgonit FlexDos with the injector F1 for foam carpet production with non-premixed chemistry. Suitable for use in entrance areas and hygiene sluices for passageways.

The device can be used manually, automatically and in batch mode. In automatic mode, the device is controlled by a timer. Within this time slot, the dosing takes place in a set cycle/pause ratio. Due to the possibility of expansion with light barriers, the system is stopped during dosing, so that no spraying of persons or vehicles with disinfectants can take place.

Advantages

- ✓ Two different control variants
- ✓ Simple handling
- ✓ External release possible
- ✓ Simple adjustment of the product concentration

calgonit FlexDos Foam Hygienic Design VA

Control and hydraulics separated, each in Hygienic Design VA cabinet



calgonit FlexDos Foam Basic

Control in plastic cabinet, Foam technology mounted on plate



Extensions and accessories

Extension with light barrier FlexDos 83000663

Operating range: 0,075 bis 10 m

Consisting of:

- ✓ 2 x reflex light barrier
- ✓ Connection cable with socket, 10 m (for hygienic and wet areas in the food industry)
- ✓ Reflector for reflex light barriers
- ✓ Mounting bracket stainless steel

Accessories

- ✓ Ball valve for water inlet
- ✓ Air connection

Nozzle holder 83000676

- ✓ Standard width 1.500 mm
- ✓ VA square
- ✓ 6 x flat jet nozzle with ball joint
- ✓ Customized adaptations also possible if required



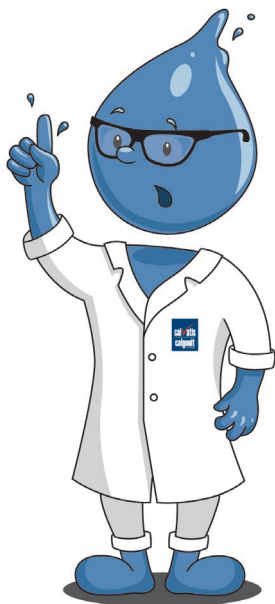
calgonit FlexDos BS

Use as a filling system for tubs, containers, tanks, etc. In addition, this device is suitable for wetting the floor with disinfectant.



Technical data:

	calgonit FlexDos Foam Hygienic Design VA	calgonit FlexDos Foam Hygienic Design VA	calgonit FlexDos Foam Basic	calgonit FlexDos Foam Basic	calgonit FlexDos BS
Material	Stainless steel	Stainless steel	Plastic	Plastic	Plastic
Injector	F1	OR	F1	OR	Dosatron
Water inlet pressure	3 - 8 bar	10 - 20 bar	3 - 8 bar	10 - 20 bar	0,3 - 6 bar max. 40°C
Air pressure	4 - 6 bar	4 - 8 bar	4 - 6 bar	4 - 8 bar	-
Water-connection	1/2" IG	1/2" IT or Quick coupling or system plug / coupling	1/2" IG	1/2" IT or Quick coupling or system plug / coupling	1/2" IG
Air connection	Ø 8 mm	Ø 6 mm	Ø 8 mm	Ø 6 mm	-
Item number	Control: 83000681 Hydraulics: 83000674	on request	on request	83000662	on request



Notice:

When connecting a dosing or cleaning system to a drinking water line, a suitable backflow prevention device (DIN EN 1717) must be installed in accordance with the German Drinking Water Ordinance (TrinkwV) and the German Technical and Scientific Association for Gas and Water (DVGW). This backflow prevention device must be installed in the supply line to prevent chemicals from flowing back into the drinking water line. An on-site drain is required so that the water escaping from the backflow prevention device can flow off.